

THIS WEEK'S NEWS

Back to school for all! | World Book Day | Lateral Flow Testing

Lateral Flow Tests for Households with Children?

You may have seen in the news that households with school age children are now able to access Lateral Flow Tests – up to two per week per household member.

Primary children are not being tested but adults living with them and members of a support bubble or childcare bubble can.

Regular testing of people without symptoms is important to help stop the virus spreading and protect your loved ones.

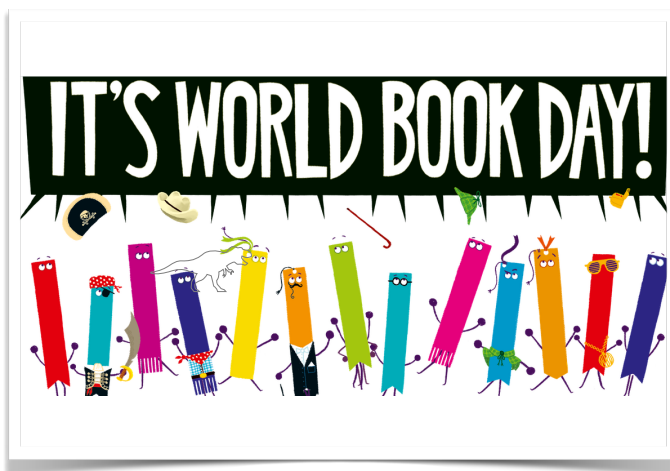
How to get a rapid lateral flow test

There are different ways to get a test for members of your child's household, childcare and support bubbles who do not have symptoms of coronavirus.

Members of households, childcare or support bubbles of school staff and pupils

From 1 March 2021, if you're a member of a household, childcare bubble or support bubble of staff or a pupil you can get a twice-weekly test:

1. through your employer if they offer testing to employees
2. at a local test site
3. by collecting a home test kit from a test site
4. by ordering a home test kit



Dear Parents & Carers

This week, there has been an air of excitement through the school; we are looking forward to the return of all the children. It has not been the same in school without everyone here! We just can't wait.

There may be a few nerves but remember that if you are nervous – put on a smile and 'nervous' turns into 'excitement'.

The children at home will know what to expect as we will still be in bubbles!

Below is the important information that has already been sent out – please remember to social distance and wear face coverings on Monday!

RETURNING TO SCHOOL - ESSENTIAL INFORMATION

Uniform, PE kit and Belongings:

Children will be expected to wear uniform from Monday 8th March. We know that buying uniform (shoes and clothing) is still difficult with many shops closed and many children now grown out of their autumn uniform. With

Get a test through your employer

Your workplace may offer rapid lateral flow testing to you. Contact your employer to find out more.

Take a test at a rapid lateral flow test site

You can take a rapid lateral flow test at a local site. Testing at these sites is assisted, which means you will swab yourself under the supervision of a trained operator.

You may need to book an appointment.

[Find your nearest rapid lateral flow test site.](#)

Collect test kits

You can collect up to 4 home test kits at a local collection point. Each kit contains 7 tests.

Anyone 18 or over can collect. You can check online if the location is busy before you go.

Order home test kits online

If you cannot get tested at your workplace, or are unable to go to a test site or collect test kits, you can order a home test kit online.

Do not order online if you can get a test through other methods. This frees up home delivery for those who need it most.

[Order rapid lateral flow home test kits](#)

What twice-weekly testing involves

1. take a test twice a week (every 3 or 4 days apart)
2. report every result to NHS Test and Trace on the same day you take the test

[Report your test result online](#) or by calling 119.

this in mind, we will be taking a relaxed approach to uniform when the children return. We understand that children may appear with the wrong shoes or non-school jumpers. As shops reopen, we will ask parents to replace items so that the children will be super smart again for September.

If struggling, the Alford Hub can often support with uniform and we are happy to accept donations to stock our pre-loved section of our web shop.

When children return, we will continue to ask that they come to school dressed in PE kit on PE days. Teachers will communicate which days via ParentHub.

Purchasing of new uniform should be done via the online shop. This can be found at <https://shop.alfordprimary.co.uk/> or accessed through our website.

Social Distancing:

When all the children return, and the numbers in school increase, sticking to social distancing will be very important to keep us all as safe.

1. All year groups will continue to have a soft start to school. **Children should arrive between 8.45am and 9am.** This is to minimise the number of adults on the playground.
2. Children can be collected between **3.10pm and 3.20pm** (3pm for EYFS) from their classroom pick up point.
3. We will continue to insist that parents do not gather in the playground or near the gates. Parents should bring their children to the correct doors at the correct times and **MUST** adhere to any one-way systems.
4. We will insist that all adults follow social distancing guidelines **AT ALL TIMES** on and around the school site - including staying 2m+ away from staff, other parents and children.
5. Only one adult should bring children to school and wherever possible siblings and pushchairs should not be brought into school.
6. Adults bringing children to school must be symptom free.

Masks/Face Coverings:

1. All adults on school premises will be expected to wear a

Attendance

Attendance from 8th March is compulsory. If your child is unable to come to school, please ensure that you let school know using the usual methods.

Term Dates

TERM 4: 2020/2021

Monday 22nd February 2021 until
Wednesday 31st March 2021

TERM 5: 2020/2021

Monday 19th April 2021 until
Friday 28th May 2021

Monday 3rd May - May Bank Holiday

TERM 6: 2020/2021

Monday 7th June 2021 until
Wednesday 21st July 2021

face covering unless they have medical exemption

2.Children will not be required to wear masks in school as per the current government guidance.

3.If a child comes to school wearing a face covering, they will be asked to remove it on entry to the classroom and place it in a plastic bag until home time.

Transport:

Parents should continue to avoid public transport wherever possible. School buses will be running from Monday 8th March. Please ensure the school office is informed via email that your child will be using the buses so a member of staff knows that they will be arriving.

Communicating with the Office/School:

As before, parents will not be allowed to enter the office or school except by invitation: email and phone queries only please (primaryschool@alford.lincs.sch.uk). The school is still unable to accept cash payments. Uniform and Breakfast/ After-School club places will need to be purchased via our web shop. This can be found at <https://shop.alfordprimary.co.uk/> OR accessed through our website. All parental meetings and conversations with staff will continue to be via email or telephone.

See you all on Monday.

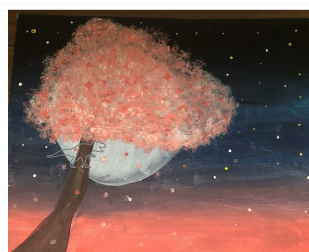
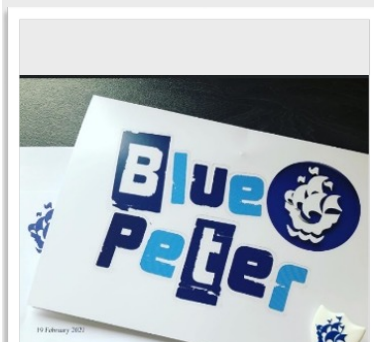
Kind regards,

Mrs Ross

Well Done Bella!

Look at this painting from Bella. One of Year 5's Friday afternoon tasks, set over 3 weeks, was to work towards achieving a Blue Peter badge: Bella had painted this beautiful picture to apply for a blue badge.

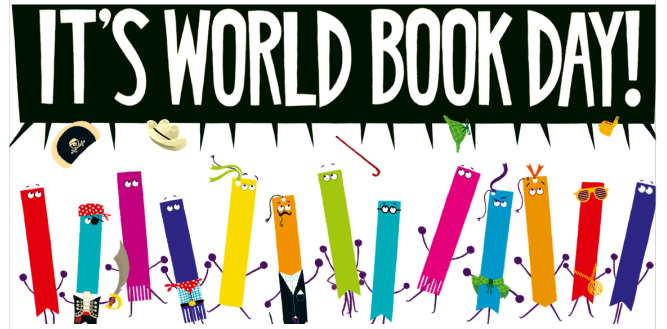
We are very proud to let you know that Bella received the Blue Peter badge that she hoped for. Well done Bella!!!!



World Book Day

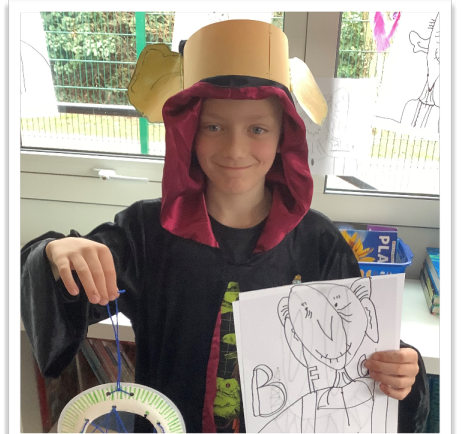
Yesterday, was 'World Book Day' and COVID did not stop the children and adults of Alford enjoying the fun and games.

We celebrated this special day with some fun-filled activities linked to stories and books!



As they have been doing the BFG in English, Year 4 made this their focus for the day. Activities included drawing the BFG in the style of Quentin Blake, making their very own dream jars, making dream catchers and making and drinking Froboscottle

(the BFG's favourite drink).
Lots of fun!





EYFS themed their day around the story of 'The Tiger Who Came to Tea'! Look at their super paintings and Eleanor's amazing tiger cupcakes!

Under 'normal circumstances' we would have usually held a 'Book Fair' in school and the children would receive a £1.00 national book token to spend. Obviously this couldn't take place in the usual way this year. However, you should have received, attached to the World Book Day Parent Hub post, a digital £1.00 book token instead! It is valid to spend from now until the 28th March. Your child can either buy one of this year's £1.00 books or put it towards the cost of another book of their choice priced at £2.99 or more. Simply print out and take this token into a

participating retailer. Please remember though that some retailers will not be open until lockdown restrictions are lifted. Some participating shops include Tesco, WH Smith, Asda, Sainsbury's and Waterstones.

A little tip – there are some books advertised for £1.00 on Amazon if you search 'World Book Day 2021'! You don't need a token to buy one of these!



THANK YOU TO THE FRIENDS OF THE SCHOOL

Finally, our wonderful PTA – the Friends of the School – are to be thanked this week. Thanks to their very kind donation of over £300, the children now have brand new equipment for lunch times!



The friends are hoping to start fund raising again when we return to school. Here are some of their ideas. Upcoming events may include:

Easter Colouring Competition

Spot the Bunny

Or maybe even an...

Easter Bonnet Competition

Further details will follow.

If you would like to support our PTA, please let the school know on primaryschool@alford.lincs.sch.uk and we will pass on your name to Katy, the Chair and Mrs Haddington, Treasurer.

•