

THIS WEEK'S NEWS

Stunning Sunflowers! | Jubilee Picnic! | Arnie Adventure!

Office Online Links

School Shop

The school shop is available through our school website to allow you to make a range of purchases or bookings at time convenient for you!

[Alford Primary School Web Shop](#)

Uniform, both new and pre-loved

[Uniform \(alfordprimary.co.uk\)](#)

PE Kit – including our fantastic House Team polo shirts

[PE KIT \(alfordprimary.co.uk\)](#)

Accessories – such as reading pets and book bags

[Accessories \(alfordprimary.co.uk\)](#)

Wrap around Care – we offer both a breakfast and after school club

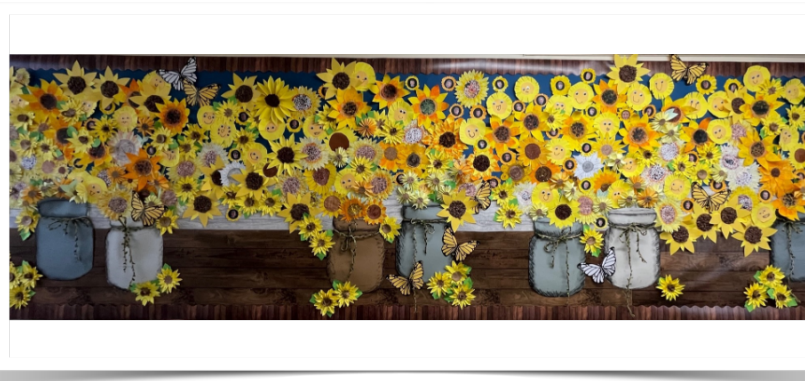
[Online Bookings \(alfordprimary.co.uk\)](#)

Educational Visits – pay for any visit or trip easily

[Educational Visits \(alfordprimary.co.uk\)](#)

Medication requests and requests to take your children out of school.

The link to access all of these forms is: [Online Forms \(alfordprimary.co.uk\)](#)



Dear Parents & Carers

What a lovely holiday, and what lovely weather we have been having! I'm so glad that we have finally had a bit of sun and a hint of warmth! We're all now crossing our fingers that this weather will last.

Last term, all the children made a sunflower to add to our whole school display. Over the holiday, Miss Hydes and Mrs Murray turned it into a stunning display (photo above). It really brightens the school; I can't wait for you to see it during parents' evening, next week.

We have a very busy term ahead. With a return to national testing, most children will have a couple of days of testing ahead. I can hear the groans from here! However, we will also be having a lot of fun! We have a visit later in May, from GB athlete Martin Norris, and at the end of this half-term, we have our Jubilee Picnic.

We are now back to face-to-face assemblies - kicking off this term with an assembly about CONFIDENCE. The children are going to be using our values leaf – Arnie Adventure – to help them develop the life-long attribute of confidence. We talked, in assembly, about how confidence is grown and can be improved with practice, and a willingness to just give something a go. The children are going to try hard to show courage in their learning, and to not worry about making mistakes. It should be an amazing term!

Have a great weekend.

Mrs Ross

I can help you to have the CONFIDENCE to use your skills in new situations... and to try new things.



Attendance

Class Attendance for the last 2 TERMS

Ladybirds - 90%

Butterflies - 93%

1H - 94%

1AW - 95%

2CH - 89%

2HW - 93%

3BM - 93%

3K - 93%

4BS - 91%

4S - 91%

5M - 93%

5L - 93%

6D - 94%

6HS - 93%

National Attendance expectations are for children to have at least 97% attendance

Please ensure that your child is in school.

Parents' Evening!

Next week, we have our rescheduled parents' evening. Your time slot will be the same as the previously booked one, but just transferred to a different day. If you can't find the information on Parent Hub, then just ask your child's teacher, or drop an email into the office, and we can let you know when you are booked.

Queen's Jubilee Picnic!

As you will be aware, this year, the Queen is celebrating her 70th Jubilee.

On Friday 27th May, WEATHER PERMITTING, we are hoping to host an amazing afternoon of music, dance and fun for our whole school community in honour of this event. We will be asking children to wear red, white and blue.

On the day, children will eat lunch as normal but will then be spending the afternoon enjoying a Jubilee picnic including singing, music from the choir, hopefully listening to the Alford Silver Band, Steel Pans, and enjoying a Friends of the School mini-Fayre .

As part of this, we will be inviting parents to join us. Those who wish to, can bring a small picnic for their child(ren) and will be able to sit together with their child on the field.

More details regarding this will be sent out ,next week, via ParentHub so look out for the messages.

COVID-19 Changes!

During the break, the rules regarding COVID-19 changed once again. Here are the following expectations during this term:

Children displaying mild illness symptoms (runny nose, sore throat, mild cough, mild headache): Children with these symptoms should continue to attend school as normal. School staff will monitor these children and call you if they feel that they are too poorly to attend school

Children who are feeling very unwell and/or have a high temperature: Children with these symptoms should stay at home until their temperature returns to normal and they feel well enough to return.

Children with a positive COVID-19 result: Children with positive COVID-19 results should stay at home for 3 days after the day they tested positive. If they still have a temperature after this, they should continue to stay at home until they feel well enough to return

Term Dates

2021/2022

TERM 1: 2021/2022

Monday 6th September 2021 until
Thursday 21st October 2021

TERM 2: 2021/2022

Monday 1st November 2021 until
Friday 17th December 2021

TERM 3: 2021/2022

Tuesday 4th January 2022 until
Friday 11th February 2022

TERM 4: 2021/2022

Monday 21st February 2022 until
Thursday 31st March 2022

TERM 5: 2021/2022

Wednesday 20th April 2022 until
Friday 27th May 2022

TERM 6: 2021/2022

Monday 6th June 2022
until
Friday 22nd July 2022

2022/2023

TERM 1: 2021/2022

Tuesday 6th September 2022 until
Friday 21st October 2021



Children living with someone with COVID-19: Children living with someone with COVID-19 should attend school as normal. Look into Learning!

Look into Learning!

Unfortunately, staffing suffered so much last term that we didn't manage to get a newsletter out. Here are some pictures of learning from last term that we didn't get to see.

Super DT talent in Year 2! Look at their brilliant Alford buildings! Can you guess the local buildings..? Fantastic joining skills Year 2 and what stunning detail!



What a fantastic 'Be Happy! Be Healthy!' day! The children had so much fun taking part in lots of different activities across school. Bubble blowing, relaxation, mindfulness colouring, fitness challenges and sports games just a few to name!



IMPORTANT DATES THIS TERM

April

- Wednesday 20th April – Return to school for pupils
- Tuesday 26th April – Thursday 28th April – Parents' Evenings

May

- Monday 2nd May – BANK HOLIDAY – SCHOOL CLOSED
- Throughout May – Year 2 National Testing
- Wednesday 4th May – Class Photographs
- Monday 9th May – Thursday 12th May – Year 6 SATs Week
- Thursday 19th May – Martin Norris – GB Athlete visit
- Friday 27th May – JUBILEE PICNIC – Wear Red, White and Blue. – 12.40pm field gate opens to parents
- Friday 27th May – Break up for Half-term

June

- WB Monday 6th June – Year 4 Multiplication Check
- WB Monday 6th June – Year 1 Phonics Check
- Wednesday 15th and Thursday 16th June – Spilsby Music Festival (Choir)
- Wednesday 15th June – Year 5 Trip to Hubbards Hill – TBC

July

- Wednesday 13th July – F.O.S Bring your STUFFED Pet to School Day – 50p
- Friday 22nd July – Last day for Children



Look at the fantastic clay pots that Year 5 have made with such carefully added detail. What a super art project!





Are you in Year 2 at school?

**And would you like to play
football for a local team?**



Alford Town FC

**is looking to recruit players for the U8 team
entering the Mid Lincs League
in September 2022**

**Why not come along to our training sessions
on**

Fridays 6.00 – 7.00 pm

**at Alford Town grounds
East Street, Alford LN13 9EQ
(next to the windmill)**

We hope to see you there

For further information contact:

**Shane Tilston (Manager) on 07805 629204
or Rob Wilson (Club Secretary)
on 07860 175326**

www.alfordtownfc.co.uk

