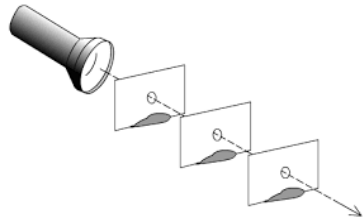
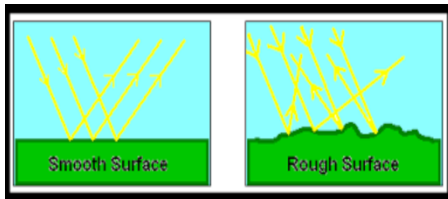


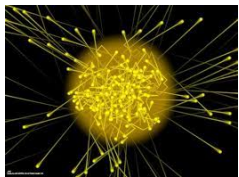
Y6 Science: Light



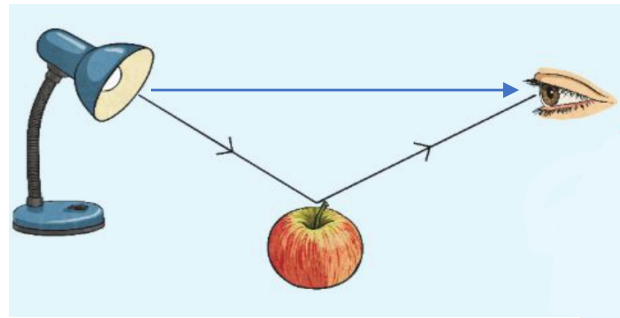
Light travels in **straight lines**, called **light rays**.



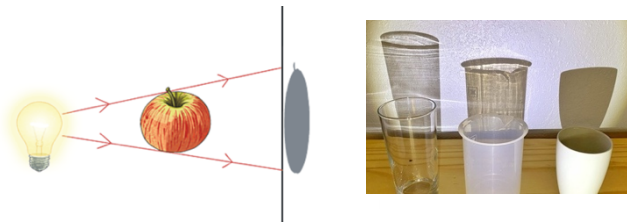
Light **reflected** off a rough surface goes in many directions. Smooth surfaces reflect light at the same angle it hits the surface at: more light goes into your eye and it looks shiny.



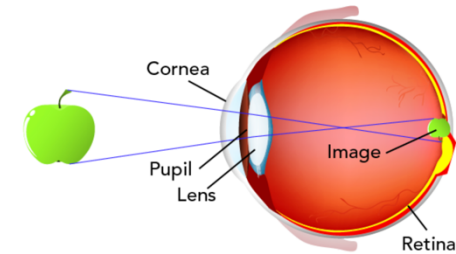
Light is a form of **energy**.



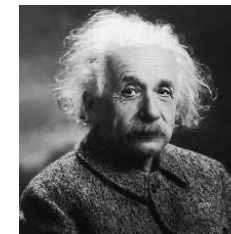
Light may come directly from **light sources**, but for other objects some light must be **reflected** from the object into our eyes for the object to be seen.



Objects that **block** light (**opaque** or **translucent**/not fully transparent) will cause shadows. Because light travels in straight lines the shape of the shadow will be the same as the outline shape of the object.



We see objects when light from them goes into our eyes.



Albert Einstein
1879-1955

- created the theory that light is made of particles called photons.



What I remember from Y3:

- darkness is an absence of light
- different light sources
- how shadows are made
- bright light can be dangerous